

Could it be your child's eyes?

ADD/ADHD

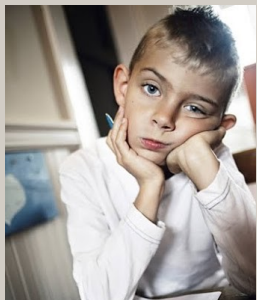
Dyslexia Anxiety
Reluctant Reader
Headaches

What Could my Child be Experiencing?

Your child might be suffering from a Binocular Vision Dysfunction (BVD), where one eye sees an image slightly differently (vertically, horizontally or both) than the other. The body corrects this misalignment by overusing and severely straining the eye muscles. This causes the symptoms of BVD, most of which are not traditionally thought to be associated with vision (but they are)! These can include headaches, blurry vision, dizziness, clumsiness, difficulty with reading, learning and concentrating, and even anxiety in large spaces like malls.

Why Does BVD often go Undiagnosed in Children?

When children enter school, they are given a standard vision screening that tests how well each eye can see (visual acuity). You know the one—cover one eye, read the eye chart...cover the other eye, read the eye chart. They are also tested to see how well their eyes work together as a team (binocular vision) to identify major eye misalignment and double vision. The schools do not test for small amounts of misalignment. Any amount of eye misalignment can lead to reading and attention difficulties. Since Binocular Vision Dysfunction may affect up to 50% of children diagnosed with ADD/ADHD, reading and other learning problems, it is critical to test for even small misalignment amounts.



Signs your child may have BVD

- ◆ They "tilt" their head
- ◆ Motion sickness
- ◆ Nausea/Difficulty gaining weight
- ◆ Clumsiness (poor depth perception)
- ◆ Headaches
- ◆ Dizziness
- ◆ Sore, tired eyes
- ◆ Skip lines when reading
- ◆ Re-reading for comprehension
- ◆ Blurred or double vision
- ◆ Light sensitivity
- ◆ Closing or covering an eye
- ◆ Anxiety

What is the solution?

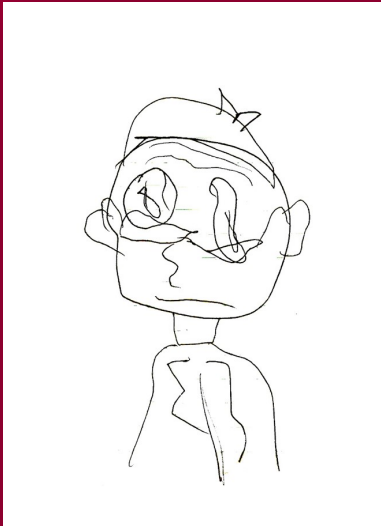
Our patients undergo a detailed and thorough examination of their vision, including assessment for small amounts of vision misalignment (the NeuroVisual Evaluation). Problems with near vision, far vision and alignment will be corrected using glasses with specialized aligning lenses, resulting in reduction (or sometimes elimination) of symptoms.

How do I find out if my child has BVD?

- ◆ Fill-in the easy-to-complete screening questionnaire at
IsItMyEyes.com
- ◆ A staff member will call you with the results and let you know if Vision Specialists can help you with your symptoms.

Live Life Through a New Lens

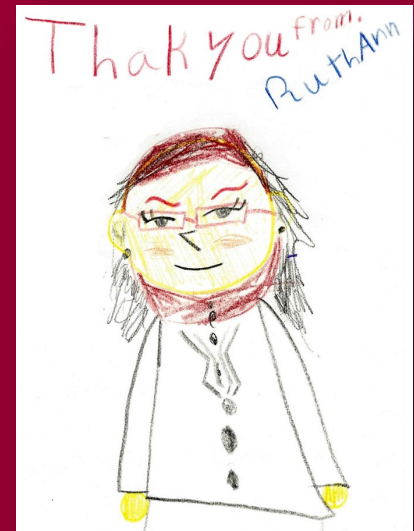
What would your child draw if he/she could see?



Before glasses

RuthAnn's Story

Seven-year old RuthAnn was having difficulty reading and paying attention in school. When she visited Vision Specialists of Michigan, she was asked to draw a picture of her doctor prior to her exam (image on left). After RuthAnn received her new glasses with specialized aligning lenses, she drew the picture on the right of her doctor.



Glasses with aligning lenses

Jessica's Headaches

"My daughter had headaches so bad she missed a lot of school. Some days all she could do was to lie in a dark room and sleep. Her pediatrician and neurologist tried a number of medications, but nothing really seemed to work. CAT scans, MRI's and all of the other tests didn't find the problem, but the doctors at Vision Specialists did. She has subtle eye misalignment, and her new glasses with specialized aligning lenses corrected it. Now Jessica rarely has bad headaches and almost never misses school."

Mother of Jessica, 13 years old

Chris' Concussion

"Chris hit his head when he fell off of his bike two years ago and hasn't been the same since. He had been getting headaches frequently, and was nauseous a lot. He was clumsy and uncoordinated. He used to be a good reader, but after his concussion he read slowly and had trouble concentrating, which made homework a struggle for him. In spite of all of his hard work, his grades had fallen. The new glasses with the aligning lenses prescribed by his doctor have made an unbelievable difference in all of these problems!"

Father of Chris, 9 years old

Sammy's Concentration Difficulties

"I've had trouble sitting still in school since first grade. I've been told I have ADD/ADHD and a 'learning disability'. Medications and other treatments really don't seem to help much. Before I started using my new glasses with the specialized lenses, I had difficulty concentrating, and reading was hard for me to do. I was a very slow reader - I had to read the same paragraph two or three times to understand it. My teachers thought I was lazy because I seemed smarter than my test scores."

Sammy, 17 years old

For over 20 years, thousands have been helped by the **NeuroVisual Evaluation** (a specialized eye exam our doctors developed that finds subtle vision misalignment). Eye-glasses using innovative aligning lenses minimize the body's need to strain the eye muscles to maintain vision alignment, resulting in a marked reduction or even elimination of Binocular Vision Dysfunction symptoms.

Call 248-258-9000



Vision-Specialists.com
2550 S. Telegraph Road, Suite 100
Bloomfield Hills, MI 48302

**Visit BVDKids.com
to see kids' BVD Stories**

Connect & Share



[/VSoFM](https://www.facebook.com/VSoFM)



[@VisionSpecMich](https://twitter.com/VisionSpecMich)



[@VisionSpecMich](https://www.instagram.com/VisionSpecMich)

To find out, visit: IsItMyEyes.com

©2017 Vision Specialists of Michigan, All Rights Reserved.

VSM.Pt&HCP.Kids1.12.19.16